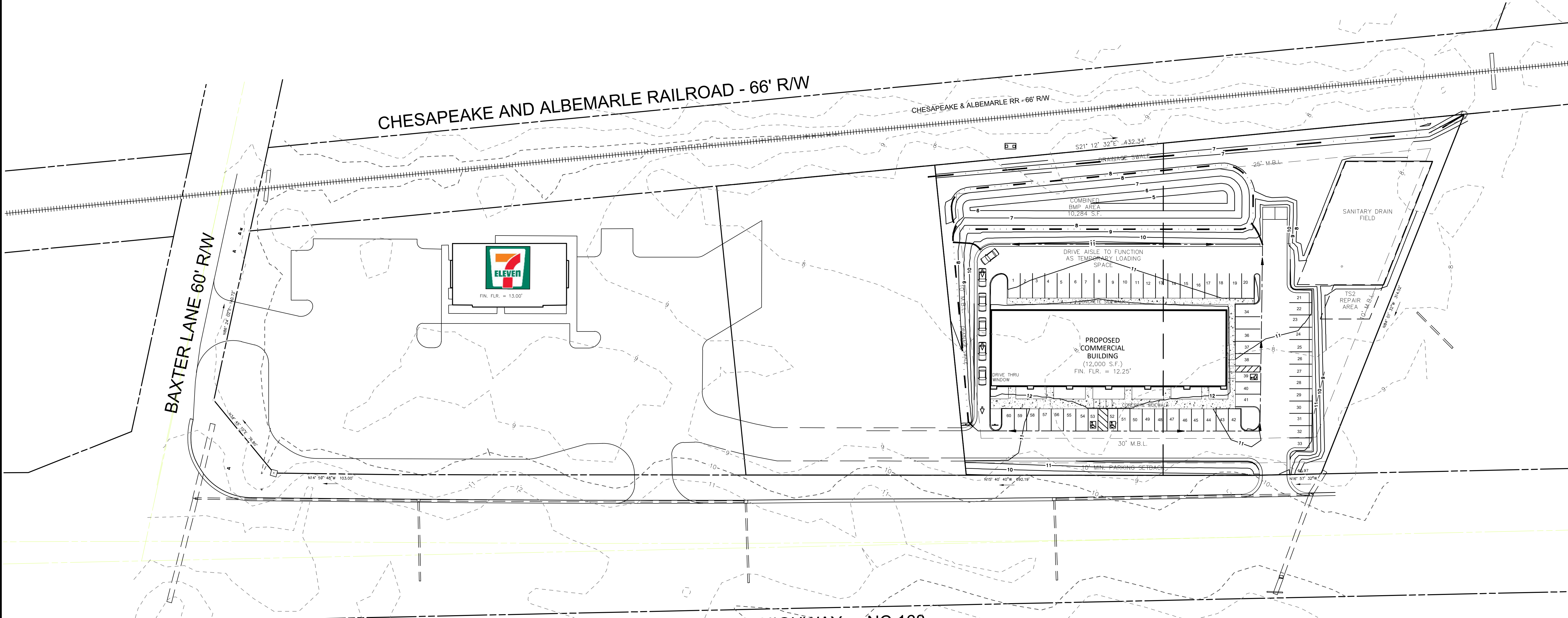


NC NAD 83(2011) GRID NORTH

### Cut/Fill Summary

Name	Cut Factor	Fill Factor	2d Area	Cut	Fill	Net
VOLUME	<b>1.000</b>	<b>1.000</b>	84352.17 Sq. Ft.	480.90 Cu. Yd.	7332.45 Cu. Yd.	6851.54 Cu. Yd.<Fill>
Totals			84352.17 Sq. Ft.	480.90 Cu. Yd.	7332.45 Cu. Yd.	6851.54 Cu. Yd.<Fill>



S:\projects\4740\_Baxter Commercial.dwg\p\4740000K3B.dwg 3/4/2022 10:07 AM HP Baxter.dwg 12500 100L2.rvt

**BISSSEL**  
PROFESSIONAL GROUP  
Engineers, Planners, Surveyors  
and Environmental Specialists

COMMERCIAL DEVELOPMENT  
THIS DOCUMENT IS THE SOLE PROPERTY OF BPG, INC. OF KITY HAWK, NORTH CAROLINA. THE REPRODUCTION IN WHOLE OR IN PART WITHOUT THE EXPRESS WRITTEN CONSENT OF MARKS BISSSEL, PRINCIPAL OF BPG, INC., COPYRIGHT 2005.

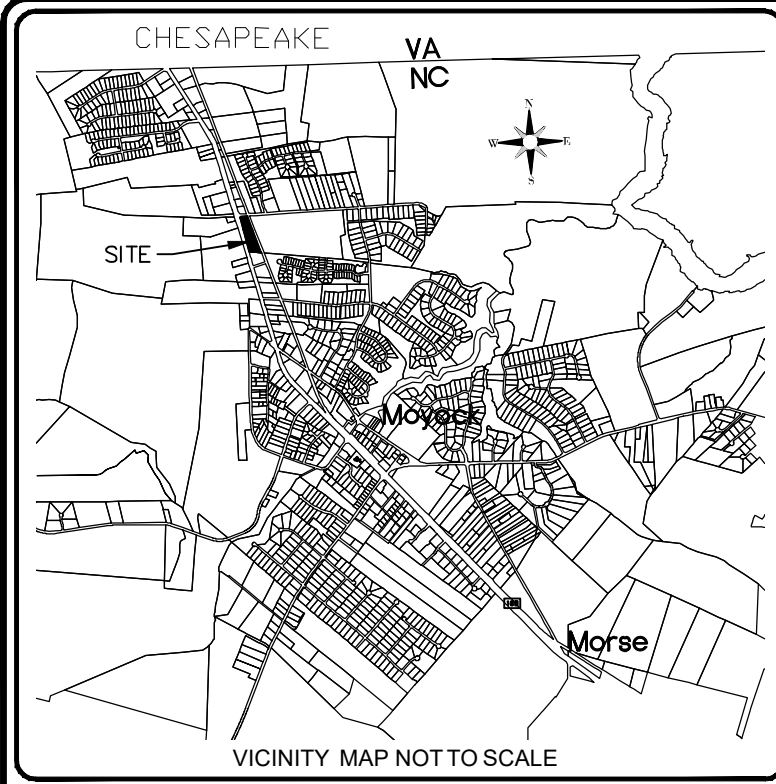
PROJECT: **BAXTER COMMERCIAL**  
MOYOCK TOWNSHIP CURRITUCK COUNTY NORTH CAROLINA  
JARVIS HARVEST LLC TRACT

NO.	DATE	DESCRIPTION

**PROGRESS**  
DRAWING  
FOR REVIEW  
PURPOSES ONLY

DATE: 3/4/22	SCALE: 1" = 40'
DRAWN: BPG	CHECKED: MSB
APPROVED: KFW	APPROVED: BPG

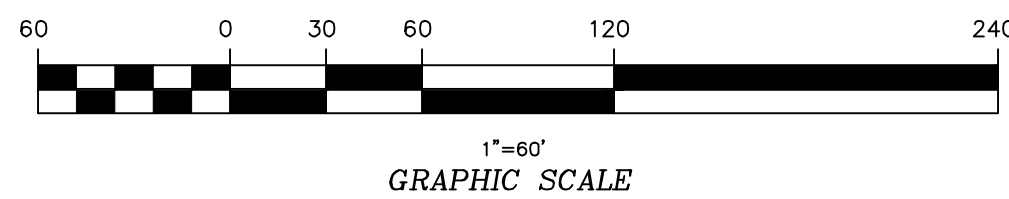
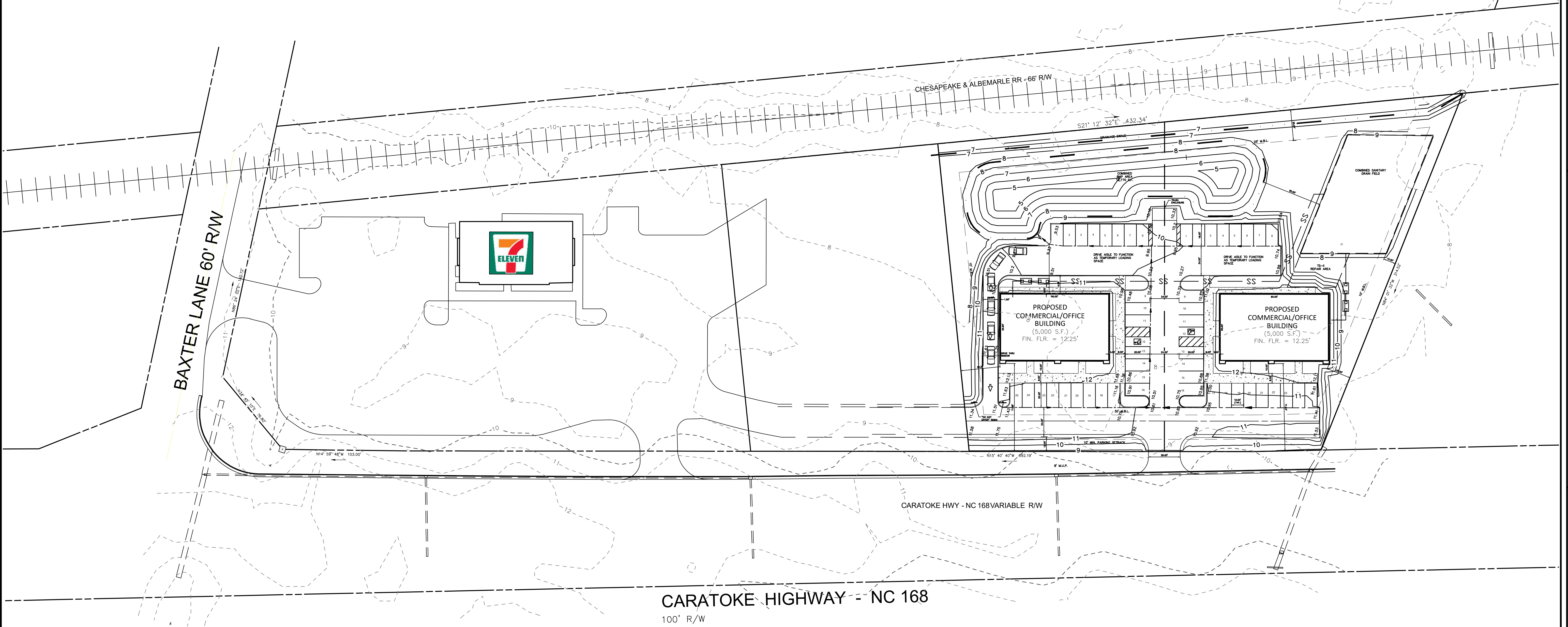
SHEET: **1** OF **1**  
CAD FILE: 4740000K3B  
PROJECT NO:  
**4740**



NC NAD 83(2011) GRID NORTH

**Cut/Fill Summary**

Name	Cut Factor	Fill Factor	2d Area	Cut	Fill	Net
Surface2	1.000	1.000	81969.91 Sq. Ft.	584.02 Cu. Yd.	6501.11 Cu. Yd.	5917.09 Cu. Yd.<Fill>
<b>Totals</b>			<b>81969.91 Sq. Ft.</b>	<b>584.02 Cu. Yd.</b>	<b>6501.11 Cu. Yd.</b>	<b>5917.09 Cu. Yd.&lt;Fill&gt;</b>



Bissell Professional Group  
 3512 North Jordan Highway  
 P.O. Box 1089  
 Kinston, North Carolina 27949  
 (252) 291-2925  
 FAX (252) 291-2928

**BISSELL**  
 PROFESSIONAL GROUP

Engineers, Planners, Surveyors  
 and Environmental Specialists

COMMERCIAL DEVELOPMENT

THIS DOCUMENT IS THE SOLE PROPERTY OF BPG, INC. OF KITY HAWK, NORTH CAROLINA. THE REPRODUCTION, IN WHOLE OR IN PART, WITHOUT THE EXPRESS WRITTEN CONSENT OF BPG, INC. IS PROHIBITED. BISSSELL, PRINCIPAL OF BPG, INC., COPYRIGHT 2005.

PROJECT: BAXTER COMMERCIAL NORTH CAROLINA  
 CURRITUCK COUNTY

JARVIS HARVEST LLC TRACT

NO.	DATE	REVISIONS DESCRIPTION

**PROGRESS DRAWING FOR REVIEW PURPOSES ONLY**

DATE: 3/4/22 SCALE: 1" = 40'

DESIGNED: BPG CHECKED: MSB

DRAWN: KFW APPROVED: BPG

SHEET: 1 OF 1

CAD FILE: 474000SK1B

PROJECT NO: 4740

S:\projects\4740\_Baxter Commercial\Drawings\Siteplan\474000SK1B.dwg 3/7/2022 3:59 PM HP D:\np\4740.dwg 3/7/2022 3:59 PM HP

CHESAPEAKE & ALBEMARLE RR - 66' R/W

36" CMP  
INV: 5.42'  
36" CMP  
INV: 6.24'

S21° 12' 32" E 432.34'

DRAINAGE SWALE

25' M.B.L.

COMBINED BMP AREA  
12,770 S.F.

COMBINED SANITARY  
DRAIN FIELD

TRASH ENCLOSURE

1 2 3 4 5 6 7 8 1 3 4 5 6 7 8

DRIVE AISLE TO FUNCTION  
AS TEMPORARY LOADING  
SPACE

DRIVE AISLE TO FUNCTION  
AS TEMPORARY LOADING  
SPACE

TS-II  
REPAIR AREA

10' M.B.L.

10' M.B.L.

15" CMP  
INV: 5.96'  
15" CMP  
INV: 6.21'

PROPOSED  
COMMERCIAL/OFFICE  
BUILDING  
(5,000 S.F.)

PROPOSED  
COMMERCIAL/OFFICE  
BUILDING  
(5,000 S.F.)

DRIVE THRU  
WINDOW

32.21'

30' M.B.L.

10' MIN. PARKING SETBACK

DO NOT  
ENTER SIGNS

8' M.U.P.

15" PIPE

CB RIM: 10.89'

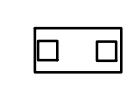
CB RIM: 10.53'

CARATOKE HWY - NC 168 VARIABLE R/W

42" RCP  
INV: 4.59'

CHESAPEAKE & ALBEMARLE RR - 66' R/W

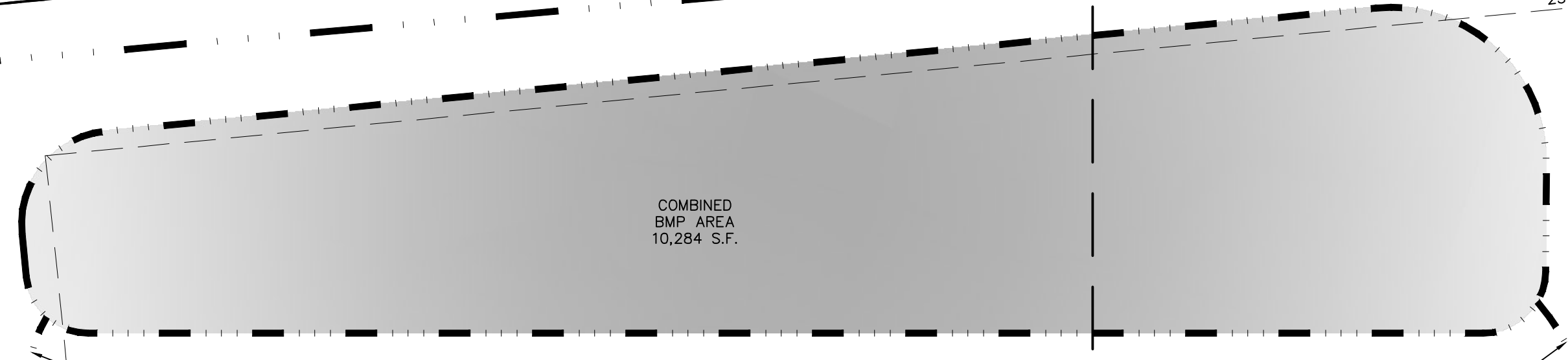
36" CMP  
INV: 5.42'  
36" CMP  
INV: 6.24'



S21° 12' 32" E 432.34'

DRAINAGE SWALE

25' M.B.L.



COMBINED  
BMP AREA  
10,284 S.F.

DRAINAGE SWALE

DRAINAGE SWALE

DRIVE AISLE TO FUNCTION  
AS TEMPORARY LOADING  
SPACE

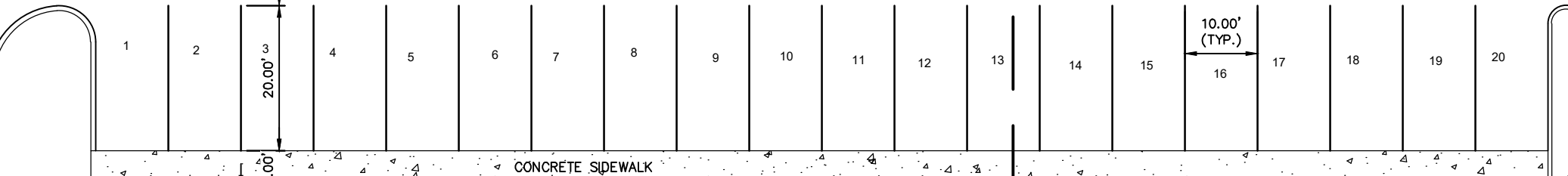
10' M.B.L.

33.32'

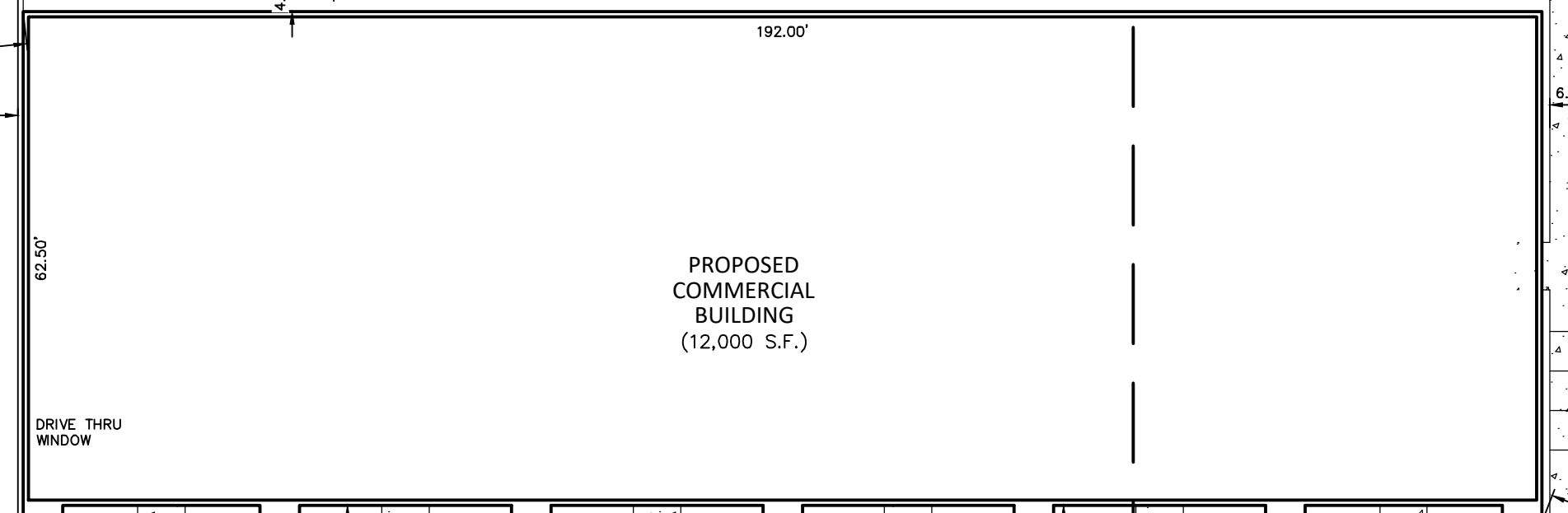
15.00'

DRIVE THRU  
WINDOW

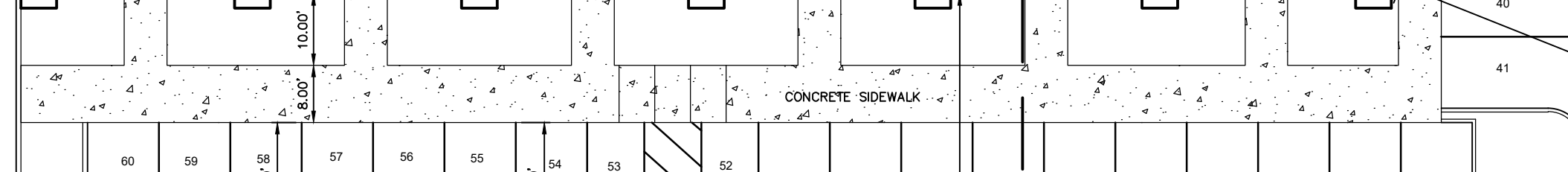
DO NOT  
ENTER SIGNS



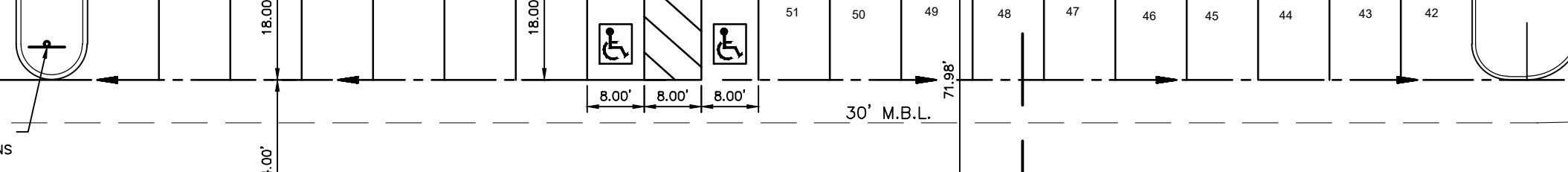
CONCRETE SIDEWALK



PROPOSED  
COMMERCIAL  
BUILDING  
(12,000 S.F.)



CONCRETE SIDEWALK



CONCRETE SIDEWALK

10' MIN. PARKING SETBACK

N15° 40' 40" W 692.19'

15" PIPE

CB RIM: 10.89'

CB RIM: 10.53'

CARATOKE HWY - NC 168 VARIABLE R/W

15" PIPE

42" RCP  
INV: 4.59'

42" RCP  
INV: 4.84'

55.97'

N16° 57' 32" W

13.85'

10' M.B.L.

10.00'

N60° 32' 38" W 416.52'

10.00'

10.00'

10.00'

10.00'

10.00'

10.00'

10.00'

10.00'

10.00'

10.00'

10.00'

10.00'

10.00'

10.00'

10.00'

10.00'

10.00'

10.00'

10.00'

10.00'

10.00'

10.00'

10.00'

10.00'

10.00'

10.00'

10.00'

10.00'

10.00'

10.00'

10.00'

10.00'

10.00'

15" CMP  
INV: 5.96'

15" CMP  
INV: 6.21'